

Joyn AFE Analytics

Control CAPEX and improve project ROI



Joyn AFE (authorization for expenditure) Analytics solution provides individuals clear, useful and meaningful insights into CAPEX. With invoice level drill-downs into AFEs and cost centers, project team members can make smarter decisions to ensure disciplined CAPEX management while improving project ROIs. Take tailored actions to keep projects on budget, and do more with less to preserve project economics. The solution comes with enterprise level security - configurable visibility permissions to ensure data is secure and accessible by the right personnel.

CAPABILITIES

- Drill down to view expenses at the AFE, cost center or assist level. View actual images of vendor invoices
- Produce customized reporting in chart, graph or line-item formats
- Calibrate actuals, budget and field estimates in one place
- Monitor AFEs over budget

BENEFITS

- Prioritize AFEs for cost monitoring and savings
- Improve CAPEX forecasting, planning and sensitivity analysis

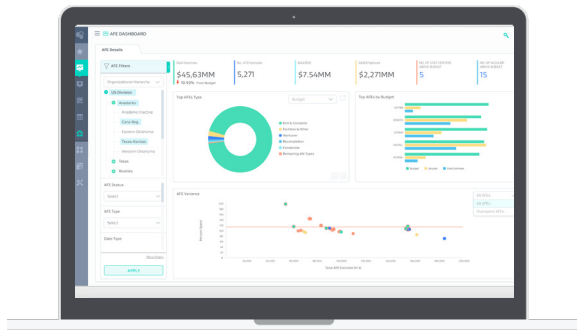
JOYN PLATFORM FEATURES

- Search driven analytics
- Configurable hierarchies, drill-downs and subscriptions
- Role-based security access with user admin module
- Data driven alerts and notifications
- Collaborative sharing of analytics across users
- Integrated with company-wide systems
- Quick deployment with minimal training

INTEGRATED SYSTEMS*

- Accounting/ERP
- Economics and reserves
- Well ops/management
- Document management


**TYPICAL INTEGRATIONS - further systems can be integrated if needed.*



CUSTOMER TEAM RESOURCES

Team Role	Commitment
Project Manager	5-8 Hours / Duration
IT /Deployment Support	Upto 40 Hours
SME (s)	10 Hours / Week
Trainer	TBD by customer

IMPLEMENTATION TIMELINE

PRE- DELIVERY PHASE	Infrastructure Setup: Hardware, network, SLT, users accounts and groups, automated accounts, access permissions					
DELIVERY PHASE	WEEK 1	WEEK 2	WEEK 3	WEEK 4	WEEK 5	POST IMPLEMENTATION
<ul style="list-style-type: none"> Product Deployment Implementation UAT Training 						<p>1 week suggested</p>

ASSUMPTIONS: As-is product implementation. Schema-conforming cubes are pre-existing. Any additional setup or customizations will extend timeline. Suggested UAT timeline is 1 week.

INFRASTRUCTURE REQUIREMENTS

DATABASE SERVER

- 2x4 3.0 GHz CPU
- 32 GB RAM
- Windows Server 2012 R2+ x64 or CentOS 7+ or Ubuntu 14+
- MySQL 5.6+ or SQL Server 2012 R2+
- Storage (Disk/SSD):
 - Operating System – 100 GB
 - Data – 250 GB
 - Logs – 50 GB
 - Backups – 250 GB

WEB SERVER

- 2x4 3.0 GHz CPU
- 32 GB RAM
- Windows Server 2012 R2+ x64 or CentOS 7+ or Ubuntu 14+
- IIS 7+ (.NET 4+) or Apache HTTP Server 2.4
- Storage (Disk/SSD):
 - Operating System – 100 GB
 - Data – 250 GB

NOTE: Requirements above are for production environment. Development and Test environments are expected to have similar or lesser requirements. Cloud options also available upon request.