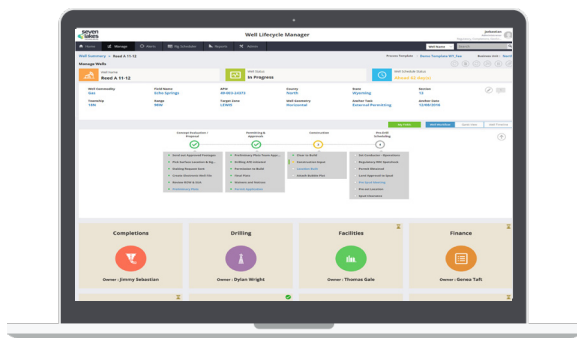


Well Lifecycle Manager

Shorten well delivery lead times and accelerate value generation by streamlining process flows, enabling collaboration and end-to-end visibility



Well Lifecycle Manager enables the planning and management of all project activities while also addressing the related data management needs – with an intuitive, web-based, fully integrated solution that’s built from the ground up to handle the unique needs of the Oil & Gas industry. Managing activities related to a drilling program is an extremely complex undertaking – with multiple project phases for each pad and well, multitudes of sub tasks performed by different groups that need to be kept track of and hundreds of data fields that need to be filled in with accuracy. Spreadsheets or Traditional project management software just don’t cut it.

CAPABILITIES

- Fully configurable and automated workflows to suit needs by regions, departments, etc.
- Supports Pad-drilling programs
- Subscription based alerts and notifications to proactively reduce risks
- Extensible to address Post-Drill Well Lifecycle Management processes
- Process analytics dashboard for continuous monitoring and improvement
- Seamless integration with company-wide systems including Rig Scheduling, Well Operations, AFE Management and Accounting software

FEATURES

- Model Wells, Pads, Facilities, Tanks, etc. and their data attributes
- Configurable Templates for various processes – Pre-Spud, Permitting, Workover, etc.
- Manage and track tasks as well as data attributes and documents associated with the
- Role-based data security and data integrity audit trails
- Process Analytics Dashboard and Reports for continuous improvement
- Alerts and notifications for proactive process interventions

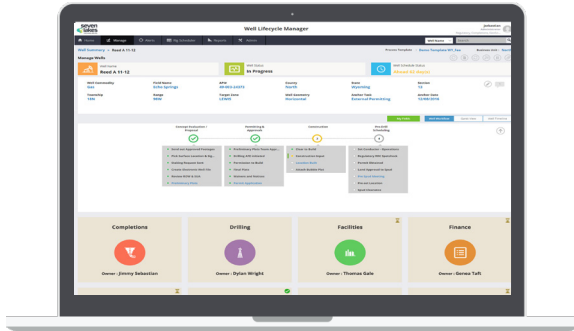
BENEFITS

- Standardized well delivery processes and improved project success
- Significant reduction in well delivery lead times and costs
- Seamless cross-departmental collaboration and process visibility
- Improved data quality and data integration

INTEGRATED SYSTEMS*

- Accounting/ERP
- Economics and reserves
- Well ops/management
- Land management
- Production accounting
- Document management


*TYPICAL INTEGRATIONS - further systems can be integrated if needed.



CUSTOMER TEAM RESOURCES

Team Role	Commitment
Project Manager	5-8 Hours / Duration
Business SME(s)	8 Hours/ Week 1-2 2 Hours/ Week 1-4
Business SME(s) & System Owners	2 Hours/ Week 3-4 4 Hours/ Week 5-6 2 Hours/ Week 7-8
System Owners	10 Hours/ Week 13-14
Infrastructure/ Business SME(s)/ Testers	4 Hours/ Week 11-14

IMPLEMENTATION TIMELINE

PRE- DELIVERY PHASE	Infrastructure Setup: Hardware, network, SLT users accounts and groups, automated accounts, access permissions Requirements Refining: Freezing the to-be state						
DELIVERY PHASE	WEEK 1-2	WEEK 3-4	WEEK 5-6	WEEK 7-8	WEEK 9-10	WEEK 11-12	WEEK 13-14
<ul style="list-style-type: none"> Process Validation Well Master Creation Configuration/ Integration Change Mgmt/ UAT Training 							

ASSUMPTIONS: As-is product implementation. Any additional setup or customizations will extend timeline. Suggested UAT timeline is 2 weeks minimum..

INFRASTRUCTURE REQUIREMENTS

DATABASE SERVER

- 32 GB RAM
- 2x4 3.0 GHz CPU
- Win 2012 x64
- SQL 2012 R2 Ent. Edition x64 (SQLDB, SSIS, SSAS)
- Disk Drives:
 - C Drive (OS) - 100 GB
 - D Drive (Data) -250 GB
 - E Drive (SQL Log/ Temp) - 50 GB
 - G Drive (Backups) - 50 GB

WEB SERVER

- 8 GB RAM
- 2x43.0 GHz CPU
- Win 2012 R2 x64
- IIS/.NET 4.0
- Disk Drives
 - C Drive (OS) - 100 GB
 - D Drive (Data) - 100 GB

NOTE: Requirements above are for production environment. Development and Test environments are expected to have similar or lesser requirements. Cloud options also available upon request.