

Joyn Production Analytics

Optimize Production and Cash Flow



CAPABILITIES

- Track multiple products (oil, gas and water)
- Monitor production trends, well status, downtime and production loss
- Benchmark KPIs for actuals and forecasts
- Monitor operating parameters such as well bore and tubing pressure. Compare them with downtime and field jobs
- Cater insights and performance goals by business unit or region

BENEFITS

- Production optimization
- Benchmark regions
- Understand field job effectiveness on production
- Enhanced Capex/Opex management
- Provides insights for optimal prioritization of wells for CapEx/OpEx plans

Joyn Production Analytics solution makes daily production monitoring possible in minutes. With our solution operations can now reallocate time and resources from data aggregation to production optimization. Monitor daily production variance, targets and loss analysis, along with downtime categories. Doers in the organization can now shape the performance of a single well, an entire field and even a region.

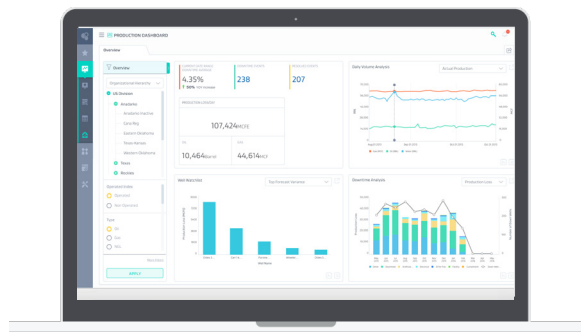
JOYN PLATFORM FEATURES

- Search driven analytics
- Configurable hierarchies, drill-downs and subscriptions
- Role-based security access with user admin module
- Data driven alerts and notifications
- Collaborative sharing of analytics across users
- Integrated with company-wide systems
- Quick deployment with minimal training


INTEGRATED SYSTEMS*

- Accounting/ERP
- Economics and reserves
- Well ops/management
- Production accounting

**TYPICAL INTEGRATIONS - further systems can be integrated if needed.*



CUSTOMER TEAM RESOURCES	
Team Role	Commitment
Project Manager	5-8 Hours / Duration
IT /Deployment Support	Upto 40 Hours
SME (s)	10 Hours / Week
Trainer	TBD by customer

IMPLEMENTATION TIMELINE						
PRE- DELIVERY PHASE	Infrastructure Setup: Hardware, network, SLT, users accounts and groups, automated accounts, access permissions					
DELIVERY PHASE	WEEK 1	WEEK 2	WEEK 3	WEEK 4	WEEK 5	POST IMPLEMENTATION
<ul style="list-style-type: none"> Product Deployment Implementation UAT Training 						1 week suggested

ASSUMPTIONS: As-is product implementation. Schema-conforming cubes are pre-existing. Any additional setup or customizations will extend timeline. Suggested UAT timeline is 1 week.

INFRASTRUCTURE REQUIREMENTS

DATABASE SERVER

- 2x4 3.0 GHz CPU
- 32 GB RAM
- Windows Server 2012 R2+ x64 or CentOS 7+ or Ubuntu 14+
- MySQL 5.6+ or SQL Server 2012 R2+
- Storage (Disk/SSD):
 - Operating System – 100 GB
 - Data – 250 GB
 - Logs – 50 GB
 - Backups – 250 GB

WEB SERVER

- 2x4 3.0 GHz CPU
- 32 GB RAM
- Windows Server 2012 R2+ x64 or CentOS 7+ or Ubuntu 14+
- IIS 7+ (.NET 4+) or Apache HTTP Server 2.4
- Storage (Disk/SSD):
 - Operating System – 100 GB
 - Data – 250 GB

NOTE: Requirements above are for production environment. Development and Test environments are expected to have similar or lesser requirements. Cloud options also available upon request.