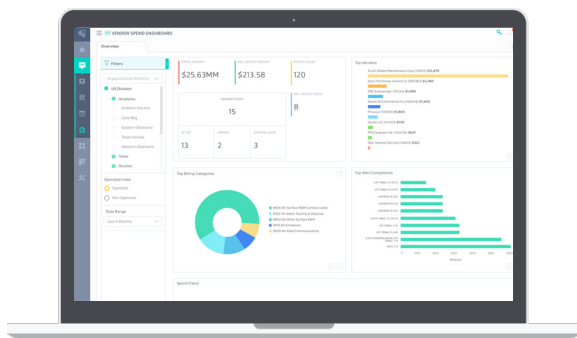


Joyn Vendor Spend Analytics

Arm everyone to manage vendors by exceptions

DATASHEET



Joyn Vendor Spend Analytics solution effortlessly highlights vendor related expense issues and exceptions. With invoice level drill-down details for expense monitoring, everyone from executives to field personnel now has access to in-depth financials sorted by job expense categories, wells and vendors. Monitor vendor performance, catch anomalies and stop spend exceptions such as incorrect cost center codes, duplicate invoices and invoice errors. The solution comes with enterprise level security - configurable visibility permissions to ensure data is secure and accessible by the authorized personnel.

CAPABILITIES

- Track spend across different vendors
- Monitor top vendors by LOE, G&A or by CAPEX
- Control visibility by total cost, average invoice and cost per vendor
- Monitor top accounts that vendors have been booked against
- Monitor expenses across vendors by top wells and cost centers

BENEFITS

- Reduce vendor expense exceptions and system errors
- Prioritize vendors by accounts, wells and spend

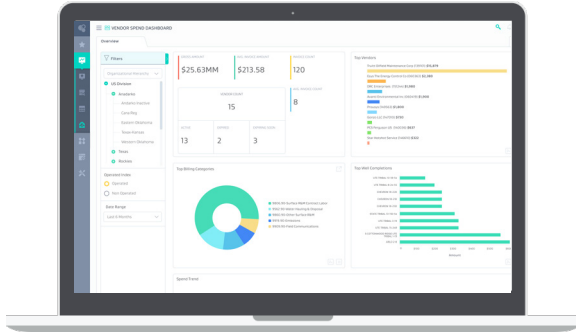
JOYN PLATFORM FEATURES

- Search driven analytics
- Configurable hierarchies, drill-downs and subscriptions
- Role-based security access with user admin module
- Data driven alerts and notifications
- Collaborative sharing of analytics across users
- Integrated with company-wide systems
- Quick deployment with minimal training


INTEGRATED SYSTEMS*

- Accounting/ERP
- Document management

**TYPICAL INTEGRATIONS - further systems can be integrated if needed.*



CUSTOMER TEAM RESOURCES	
Team Role	Commitment
Project Manager	5-8 Hours / Duration
IT /Deployment Support	Upto 40 Hours
SME (s)	10 Hours / Week
Trainer	TBD by customer

IMPLEMENTATION TIMELINE						
PRE- DELIVERY PHASE	Infrastructure Setup: Hardware, network, SLT, users accounts and groups, automated accounts, access permissions					
DELIVERY PHASE	WEEK 1	WEEK 2	WEEK 3	WEEK 4	WEEK 5	POST IMPLEMENTATION
<ul style="list-style-type: none"> Product Deployment Implementation UAT Training 						<p>1 week suggested</p>

ASSUMPTIONS: As-is product implementation. Schema-conforming cubes are pre-existing. Any additional setup or customizations will extend timeline. Suggested UAT timeline is 1 week.

INFRASTRUCTURE REQUIREMENTS

DATABASE SERVER

- 2x4 3.0 GHz CPU
- 32 GB RAM
- Windows Server 2012 R2+ x64 or CentOS 7+ or Ubuntu 14+
- MySQL 5.6+ or SQL Server 2012 R2+
- Storage (Disk/SSD):
 - Operating System – 100 GB
 - Data – 250 GB
 - Logs – 50 GB
 - Backups – 250 GB

WEB SERVER

- 2x4 3.0 GHz CPU
- 32 GB RAM
- Windows Server 2012 R2+ x64 or CentOS 7+ or Ubuntu 14+
- IIS 7+ (.NET 4+) or Apache HTTP Server 2.4
- Storage (Disk/SSD):
 - Operating System – 100 GB
 - Data – 250 GB

NOTE: Requirements above are for production environment. Development and Test environments are expected to have similar or lesser requirements. Cloud options also available upon request.