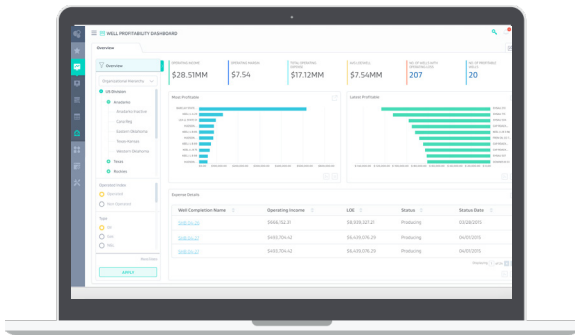


Joyn Well Profitability Analytics

Conduct regular well reviews and take timely action to boost profitability



Joyn Well Profitability Analytics solution makes daily well reviews possible in minutes for operations. Teams can now shift their time from aggregating data to focusing on issues with underperforming wells and cash flow. Field personnel, engineers and managers can now attain meaningful insights and turn them into actions such as shutting in wells and prioritizing wells for maintenance. Improve the operational and financial performance of an entire field and even a region, one well at a time.

CAPABILITIES

- Identify opportunistic wells for action immediately
- Toggle between accounting and service dates to visualize cash flow by each type
- View multiple wells of your choice at the same time
- Review production metrics, downtime, and jobs in parallel
- Visualize revenue, expense and gross cash flow in parallel
- Analyze casing pressure, tubing pressure and daily volumes
- Drill down and view vendor invoices for each well expense

BENEFITS

- Eliminate time spent gathering, cleaning data to perform well reviews
- Make daily well reviews simple to track underperforming wells and impact bottom line
- Categorize job expenditures by well and downtime; and determine future job types and spend impacts to production
- Provide insights for optimal prioritization of wells for CAPEX-OPEX plans

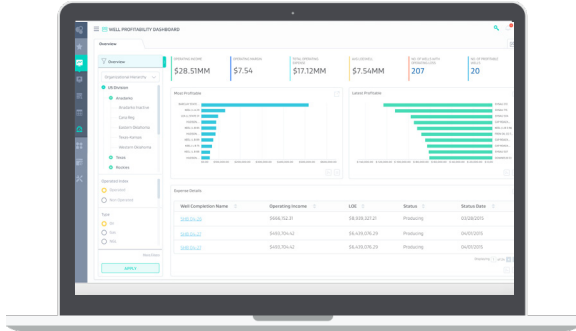
JOYN PLATFORM FEATURES

- Search driven analytics
- Configurable hierarchies, drill-downs and subscriptions
- Role-based security access with user admin module
- Data driven alerts and notifications
- Collaborative sharing of analytics across users
- Integrated with company-wide systems
- Quick deployment with minimal training


INTEGRATED SYSTEMS*

- Accounting/ERP
- Economics and reserves
- Well ops/management
- Production accounting
- Document management

**TYPICAL INTEGRATIONS - further systems can be integrated if needed.*



CUSTOMER TEAM RESOURCES	
Team Role	Commitment
Project Manager	5-8 Hours / Duration
IT /Deployment Support	Upto 40 Hours
SME (s)	10 Hours / Week
Trainer	TBD by customer

IMPLEMENTATION TIMELINE						
PRE- DELIVERY PHASE	Infrastructure Setup: Hardware, network, SLT, users accounts and groups, automated accounts, access permissions					
DELIVERY PHASE	WEEK 1	WEEK 2	WEEK 3	WEEK 4	WEEK 5	POST IMPLEMENTATION
<ul style="list-style-type: none"> Product Deployment Implementation UAT Training 						<p>1 week suggested</p>

ASSUMPTIONS: As-is product implementation. Schema-conforming cubes are pre-existing. Any additional setup or customizations will extend timeline. Suggested UAT timeline is 1 week.

INFRASTRUCTURE REQUIREMENTS

DATABASE SERVER

- 2x4 3.0 GHz CPU
- 32 GB RAM
- Windows Server 2012 R2+ x64 or CentOS 7+ or Ubuntu 14+
- MySQL 5.6+ or SQL Server 2012 R2+
- Storage (Disk/SSD):
 - Operating System – 100 GB
 - Data – 250 GB
 - Logs – 50 GB
 - Backups – 250 GB

WEB SERVER

- 2x4 3.0 GHz CPU
- 32 GB RAM
- Windows Server 2012 R2+ x64 or CentOS 7+ or Ubuntu 14+
- IIS 7+ (.NET 4+) or Apache HTTP Server 2.4
- Storage (Disk/SSD):
 - Operating System – 100 GB
 - Data – 250 GB

NOTE: Requirements above are for production environment. Development and Test environments are expected to have similar or lesser requirements. Cloud options also available upon request.